

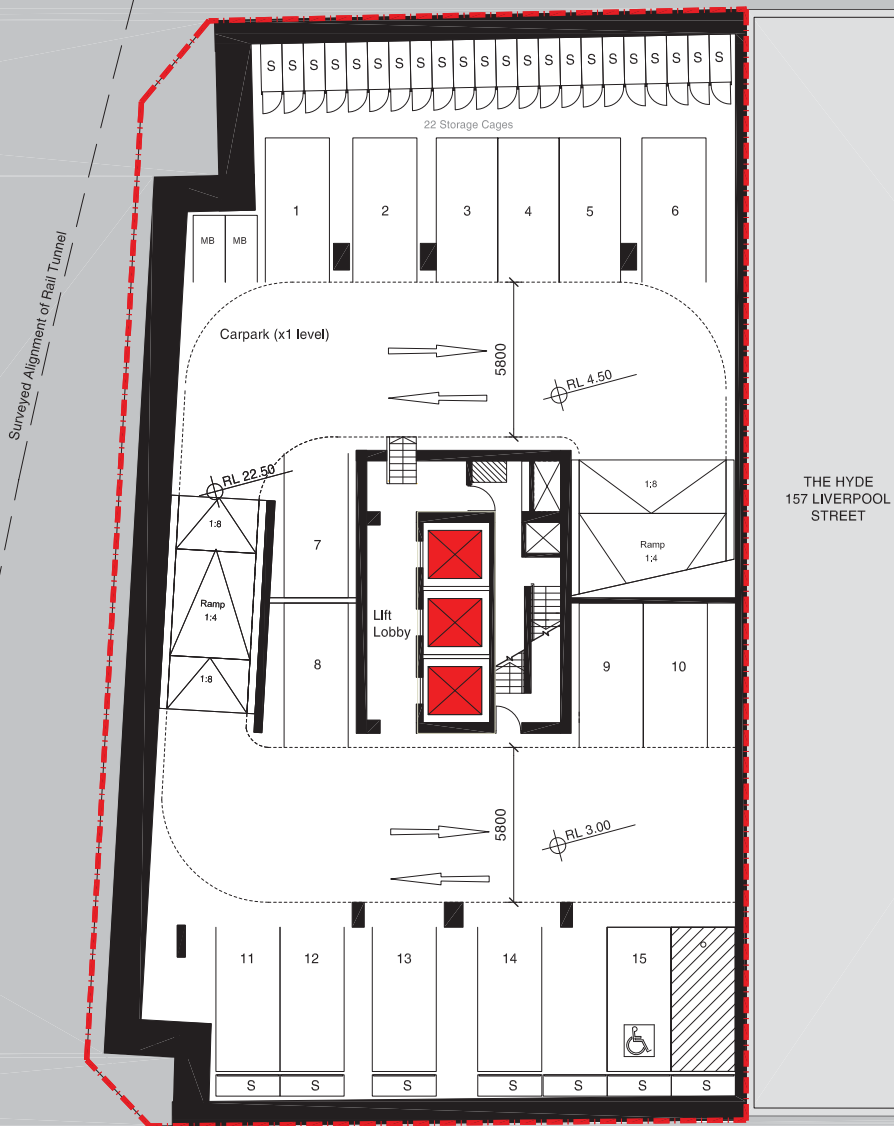
ATTACHMENT A

ATTACHMENT A

ARCHITECTURAL PLANS

130-134 ELIZABETH STREET, SYDNEY

ATTACHMENT A



PRELIMINARY
NOT FOR CONSTRUCTION

Revision	Date	Description	Initial	Checked
A	19.12.14	Development Application	KW	AD/DT

130 Elizabeth Street, Sydney
Cbus Property 130 Elizabeth Street Pty Ltd
Basement Plan
Level B7



Check all dimensions and site conditions prior to commencement of any work, the purchase or ordering of any materials, fittings, plant, services or equipment and the preparation of this drawing and the fabrication of any components.
All drawings to be made in accordance with all relevant documents and all other constraints documents.
Do not scale drawings made for printing or reproduction. Any dimensions for scale should be referred to the original drawings.
All drawings may not be reproduced or distributed without prior permission from the architect.

Scale	1:100 @ A1 (1:200 @ A3)
Drawn	KW Checked AD
Project No.	S11733
Status	Development Application
Plot Date	19/12/2014 12:45:22 PM
Plot File	S:\11733\11733\11733_cbus_130\11733\11733_basement_b7_mechanical.rvt
Drawing No.	DA03.101[A] (Revision)

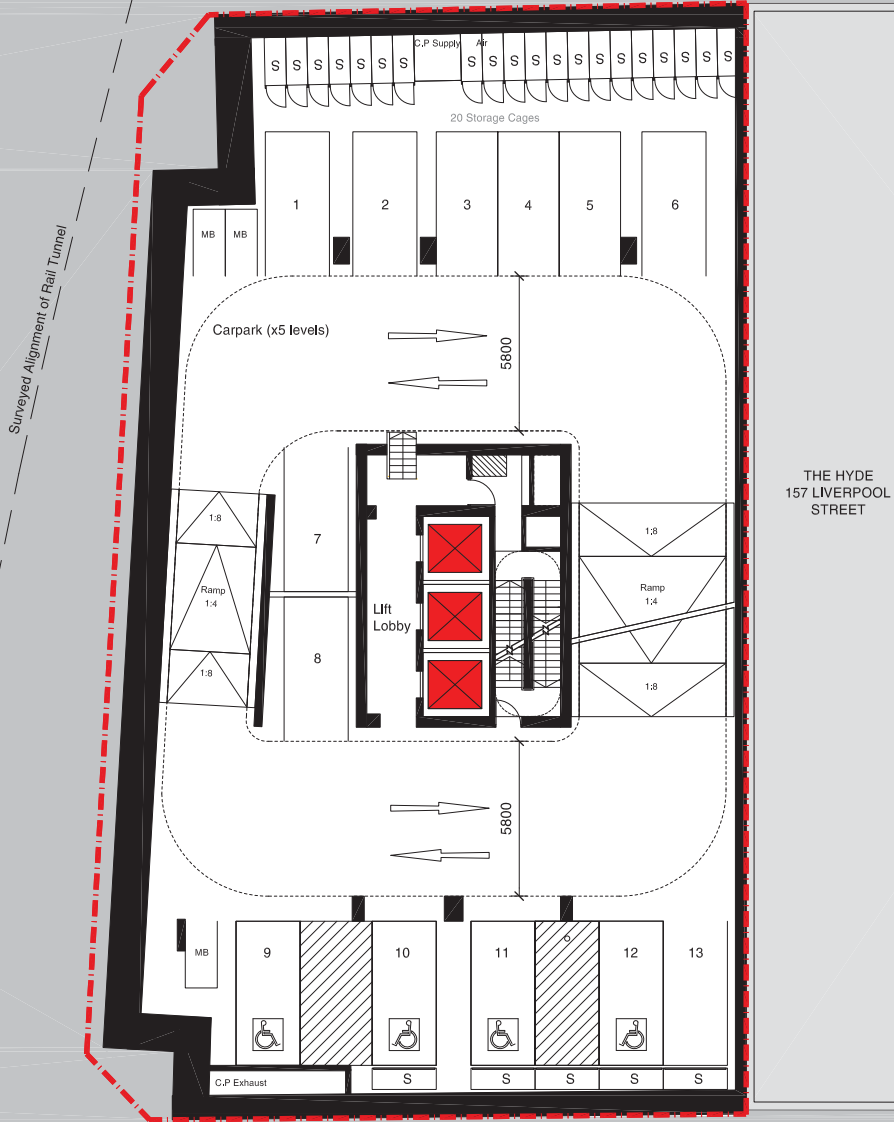
Melbourne 1 Nicholson Street
Melbourne VIC 3000 Australia
T 03 8664 6200 F 03 8664 6300
email: mel@bates-smart.com.au
http://www.bates-smart.com.au

Sydney 43 Brittain Street
Sydney NSW 2010 Australia
T 02 8354 5100 F 02 8354 5199
email: syd@bates-smart.com.au
http://www.bates-smart.com.au

Bates Smart Architects Pty Ltd ABN 68 094 740 986

BATESSMART

ATTACHMENT A



PRELIMINARY
NOT FOR CONSTRUCTION

Revision	Date	Description	Initial	Checked
A	19.12.14	Development Application	KW	AD/DT

130 Elizabeth Street, Sydney
Cbus Property 130 Elizabeth Street Pty Ltd
Basement Plan
Level B2-B6



Check all dimensions and site conditions prior to commencement of any work, the purchase or ordering of any materials, design, order, and/or requirements and the approval of this drawing and the satisfaction of any conditions.
All drawings to be made in accordance with all relevant documents and all other constraints documents.
Do not scale drawings used for construction purposes only. Any dimensions for construction shall be referred to the original drawings.
All drawings may not be reproduced or distributed without prior permission from the architect.

Scale:	1:100 @ A1 (1:200 @ A3)
Drawn:	KW Checked AD
Project No.:	S11733
Status:	Development Application
Plot Date:	19/12/2014 12:45:31 PM
Plot File:	S:\11733\11733\11733_cbus_130ElizabethB2B6_mechanical.dwg
Drawing No.:	DA03.102[A] (Revision)

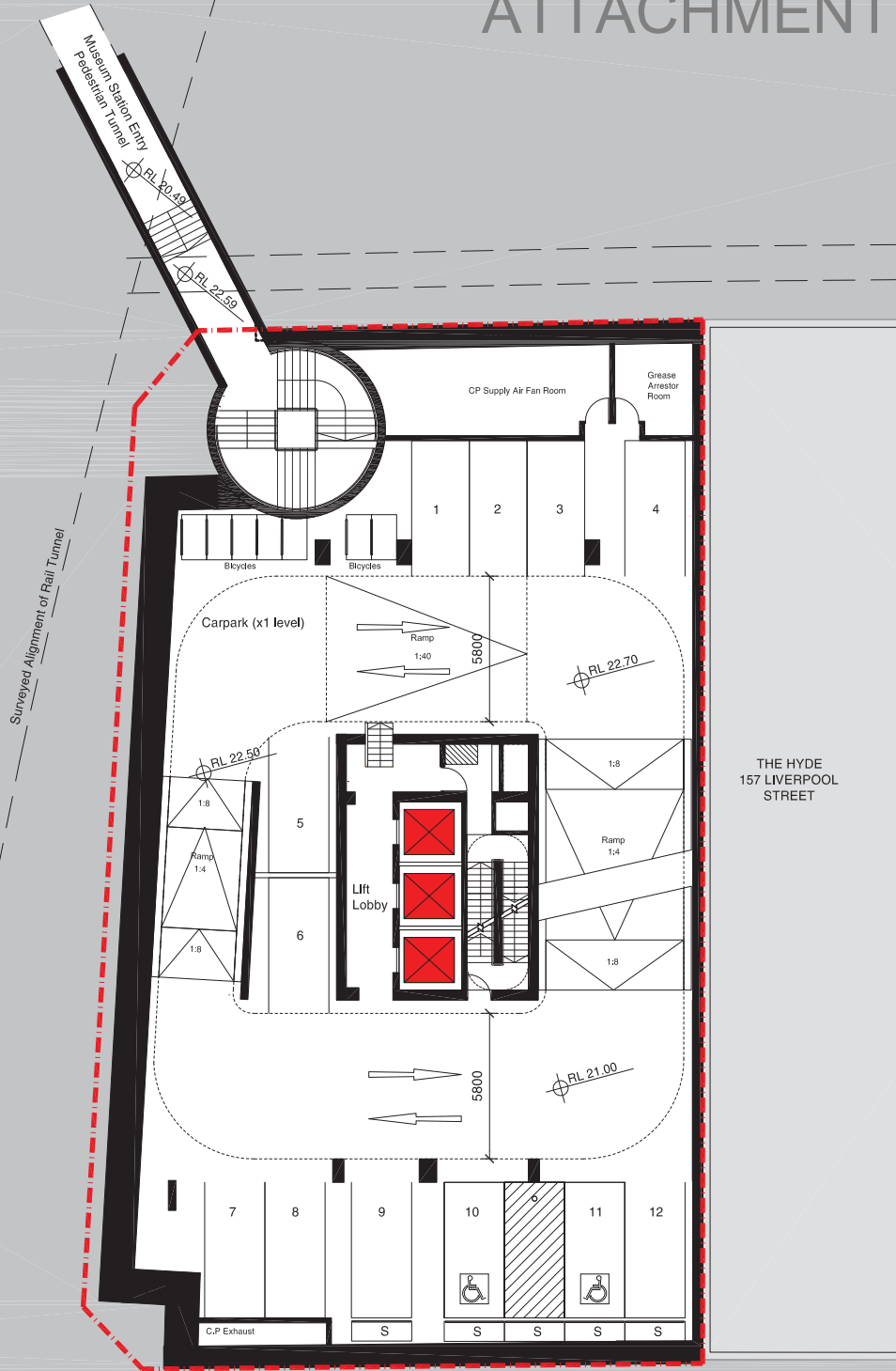
Melbourne 1 Nicholson Street
Melbourne VIC 3000 Australia
T 03 8664 6200 F 03 8664 6300
email: melf@batesmart.com.au
http://www.batesmart.com.au

Sydney 43 Britmore Street
Sydney NSW 2010 Australia
T 02 8354 5100 F 02 8354 5199
email: syd@batesmart.com.au
http://www.batesmart.com.au

Bates Smart Architects Pty Ltd ABN 66 094 740 986

BATESSMART

ATTACHMENT A



PRELIMINARY
NOT FOR CONSTRUCTION

Revision	Date	Description	Initial	Checked
A	19.12.14	Development Application	KW	ADD/T

130 Elizabeth Street, Sydney
Cbus Property 130 Elizabeth Street Pty Ltd
Basement Plan
Level B1



Check all dimensions and site conditions prior to commencement of any work, the purchase or ordering of any materials, fittings, plant, services or equipment and the preparation of any drawings and the fabrication of any components.
All drawings to be made in accordance with all relevant documents and all other constraints documents.
Do not rely on drawings made for other than this site only. Any dimensions on drawings shall be referred to the architect for clarification.
All drawings may not be reproduced or distributed without prior permission from the architect.

Scale:	1:100 @ A1 (1:200 @ A3)
Drawn:	KW Checked AD
Project No.:	S11733
Status:	Development Application
PKI Date:	19/12/2014 12:24:41 PM
PKI File:	S:\1733\1733\1733_Cbus_130\Bates\B100_mtrical\pk1... ...BATES130.dwg
Drawing No.:	DA03.103[A] (Revision)

Melbourne 1 Nicholson Street
Melbourne VIC 3000 Australia
T 03 8664 6200 F 03 8664 6300
email: mel@batesmart.com.au
http://www.batesmart.com.au

Sydney 43 Britmore Street
Sydney NSW 2010 Australia
T 02 8354 5100 F 02 8354 5199
email: syd@batesmart.com.au
http://www.batesmart.com.au

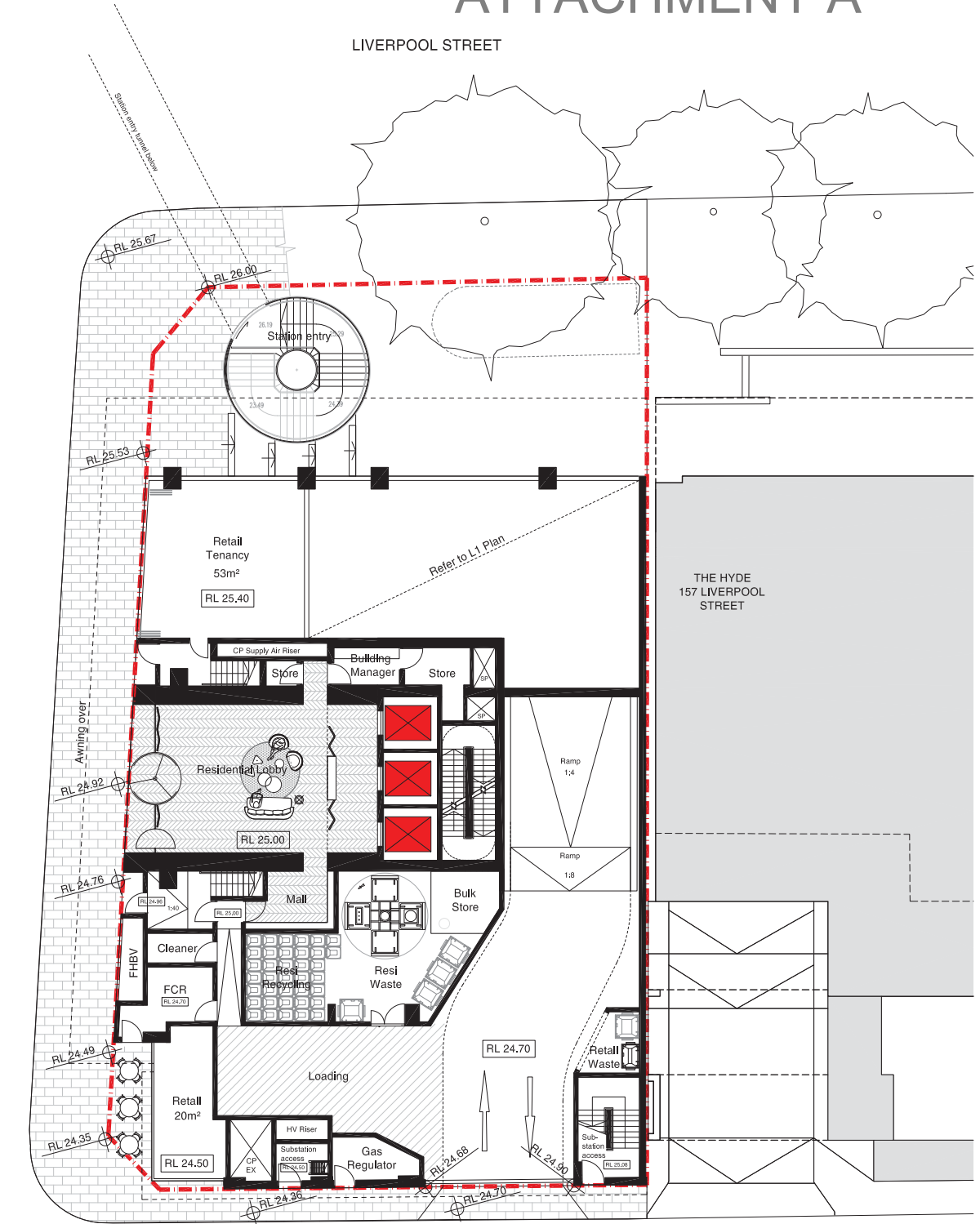
Bates Smart Architects Pty Ltd ABN 66 094 740 986

BATESSMART

ATTACHMENT A

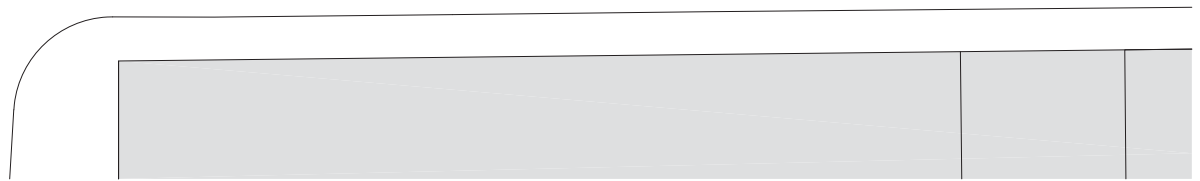
LIVERPOOL STREET

ELIZABETH STREET



THE HYDE
157 LIVERPOOL
STREET

CLARKE STREET



130 Elizabeth Street, Sydney
Hyde Development Nominees Pty Ltd
Ground Level Plan

Scale: 1:100 @ A1 (1:200 @ A3)
 Drawn: MK Checked: AD
 Project No.: S11733
 Status: Amended Development Application
 Plot Date: 3/7/2015 3:51:22 PM
 Plot File: S:\1733\1733\1733\Draw_130Elizabeth00_metric.dwg
 Drawing No.: **DA03.200[B]** (Revision)

Melbourne 1 Nicholson Street
Melbourne VIC 3000 Australia
T 03 8664 6200 F 03 8664 6300
email: info@bates-smart.com.au
http://www.bates-smart.com.au

Sydney 43 Brisbane Street
Sunny Hills NSW 2010 Australia
T 02 8354 5100 F 02 8354 5199
email: syd@bates-smart.com.au
http://www.bates-smart.com.au

Bates Smart Architects Pty Ltd ABN 68 094 740 986

PRELIMINARY
NOT FOR CONSTRUCTION

Rev/No	Date	Description	Initial	Checked
B	02.07.15	Amended DA	MK	AD
A	19.12.14	Development Application	AE	ADD/DT

Check all dimensions and site conditions prior to commencement of any work. The purchaser or owner of any property, building, site, or other structures and the approval of this drawing and the satisfaction of any conditions.
 All drawings to be made in accordance with all relevant documents and all other constraints documents.
 Do not refer to drawings made for other projects or sites. Any dimensions for other projects or sites referred to in the drawings are not to be reproduced or distributed without prior permission from the architect.
 All drawings may not be reproduced or distributed without prior permission from the architect.

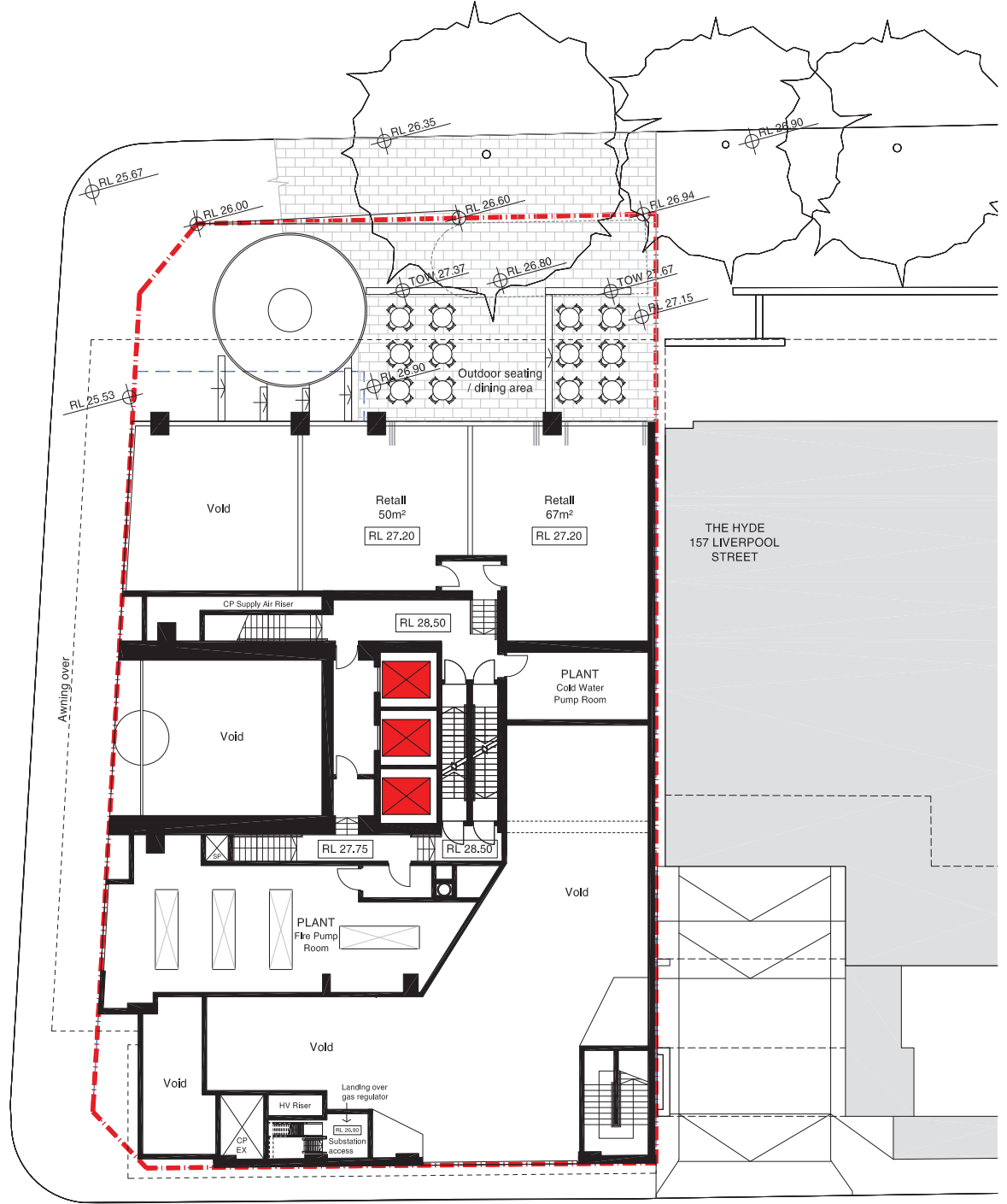


BATESSMART

ATTACHMENT A

LIVERPOOL STREET

ELIZABETH STREET



CLARKE STREET



130 Elizabeth Street, Sydney
Hyde Development Nominees Pty Ltd
Level 1 Plan

Scale: 1:100 @ A1 (1:200 @ A3)
 Drawn: MK Checked: AD
 Project No.: S11733
 Status: Amended Development Application
 Plot Date: 3/7/2015 3:43:21 PM
 Plot File: S:\1733\1733\1733_cour_130\Batesmart00_metric\da03.201.dwg
 Drawing No.: DA03.201[B] (Revision)

Melbourne 1 Nicholson Street
Melbourne VIC 3000 Australia
T 03 8664 6200 F 03 8664 6300
email: info@batesmart.com.au
http://www.batesmart.com.au

Sydney 43 Brisbane Street
Sunny Hills NSW 2010 Australia
T 02 8354 5100 F 02 8354 5199
email: syd@batesmart.com.au
http://www.batesmart.com.au

Bates Smart Architects Pty Ltd ABN 68 094 740 986

PRELIMINARY
NOT FOR CONSTRUCTION

Revision	Date	Description	Initial	Checked
B	02.07.15	Amended DA	MK	AD
A	19.12.14	Development Application	AE	AD/DT

Check all dimensions and conditions prior to commencement of any work. The purchaser or owner of any goods, materials, plant and equipment and the approval of this drawing and the satisfaction of all conditions.
 All drawings to be made in accordance with the relevant standards and other construction documents.
 Do not use drawings or plans for construction or other purposes without the written consent of Bates Smart Architects.
 All drawings may not be reproduced or distributed without prior permission from the architect.



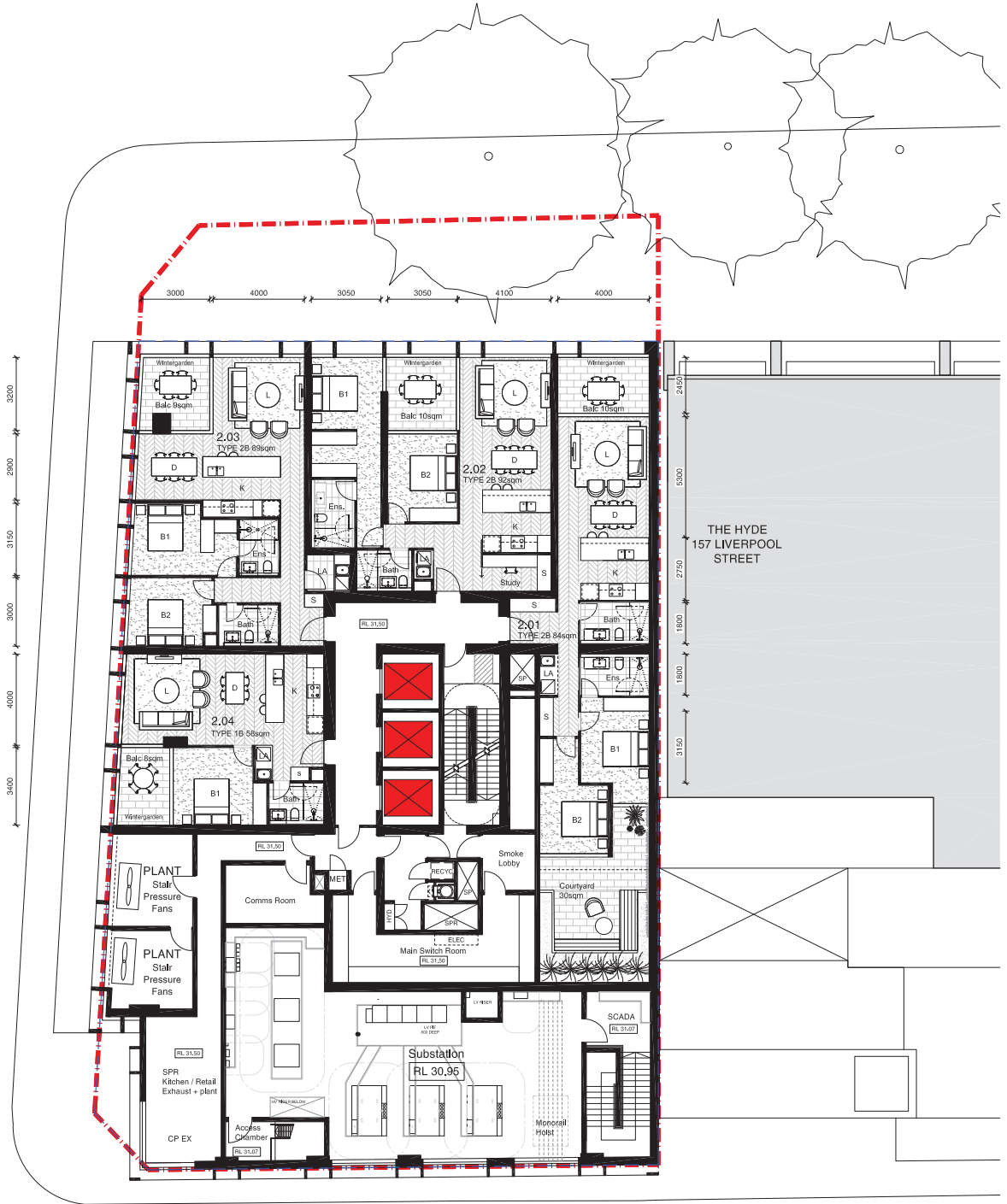
DA03.201[B]

BATESSMART

ATTACHMENT A

LIVERPOOL STREET

ELIZABETH STREET



THE HYDE
157 LIVERPOOL STREET

CLARKE STREET

130 Elizabeth Street, Sydney
Hyde Development Nominees Pty Ltd
Level 2 Plan

Scale: 1:100 @ A1 (1:200 @ A3)
 Drawn: MK Checked: AD
 Project No.: S11733
 Status: Amended Development Application
 Pkt Date: 3/7/2015 3:43:23 PM
 Pkt File: S:\1733\1733\1733_Cover_130Elizabeth00_metric.dwg
 Drawing No.: DA03.202[B] (Revision)

Melbourne 1 Nicholson Street
Melbourne VIC 3000 Australia
T 03 8664 6200 F 03 8664 6300
email: info@batesmart.com.au
http://www.batesmart.com.au

Sydney 43 Brisbane Street
Sydney NSW 2010 Australia
T 02 8354 5100 F 02 8354 5199
email: syd@batesmart.com.au
http://www.batesmart.com.au

Bates Smart Architects Pty Ltd ABN 68 094 740 986

PRELIMINARY
NOT FOR CONSTRUCTION

Revision	Date	Description	Initial	Checked
B	02.07.15	Amended DA	MK	AD
A	19.12.14	Development Application	AE	ADD/T

Check all dimensions and site conditions prior to commencement of any work, the purchase or ordering of any materials. Make all site and/or equipment and the approval of this drawing and the satisfaction of any conditions.
 All drawings to be made in accordance with all relevant documents and all other constraints documents.
 Do not scale drawings made for this drawing only. Any dimensions on all drawings shall be referred to the architect for clarification.
 All drawings may not be reproduced or distributed without prior permission from the architect.



BATESSMART

ATTACHMENT A

LIVERPOOL STREET

ELIZABETH STREET



CLARKE STREET

130 Elizabeth Street, Sydney
Hyde Development Nominees Pty Ltd
Level 3 Plan

Scale: 1:100 @ A1 (1:200 @ A3)
 Drawn: MK Checked: AD
 Project No.: S11733
 Status: Amended Development Application
 Plot Date: 3/7/2015 3:43:33 PM
 Plot File: S:\11733\11733\11733_cour_130Elizabeth00_metric.dwg
 Drawing No.: **DA03.203[B]** (Revision)

Melbourne 1 Nicholson Street
Melbourne VIC 3000 Australia
T 03 8664 6200 F 03 8664 6300
email: mel@batesmart.com.au
http://www.batesmart.com.au

Sydney 43 Brisbane Street
Sydney NSW 2010 Australia
T 02 8354 5100 F 02 8354 5199
email: syd@batesmart.com.au
http://www.batesmart.com.au

Bates Smart Architects Pty Ltd ABN 66 094 740 986

PRELIMINARY
NOT FOR CONSTRUCTION

Revision	Date	Description	Initial	Checked
B	02.07.15	Amended DA	MK	AD
A	19.12.14	Development Application	KW	ADD/DT

Check all dimensions and site conditions prior to commencement of any work, the purchase or ordering of any materials, fixtures, fittings, services or equipment and the preparation of this strategy and/or the fabrication of any construction.
 All drawings to be made in accordance with all relevant documents and all other constraints documents.
 Do not refer to drawings made for other projects or sites, nor to drawings for other projects or sites, unless referred to in the drawings for this project.
 All drawings may not be reproduced or distributed without prior permission from the architect.



BATESSMART

ATTACHMENT A

LIVERPOOL STREET

ELIZABETH STREET



THE HYDE
157 LIVERPOOL STREET

CLARKE STREET

PRELIMINARY
NOT FOR CONSTRUCTION

Revision	Date	Description	Initial	Checked
B	02.07.15	Amended DA	MK	AD
A	19.12.14	Development Application	KW	AD/DT

130 Elizabeth Street, Sydney
Hyde Development Nominees Pty Ltd
Lower Podium Plan
Levels 4-6
Showing Level 4 Plan



Check all dimensions and site conditions prior to commencement of any work, the purchase or transfer of any assets, the design, construction or installation and the approval of this drawing and the satisfaction of all conditions.
All drawings to be made in accordance with all relevant documents and all other constraints documents.
Do not rely on drawings made for other than this work. Any alterations to the drawings shall be referred to the architect for details.
All drawings may not be reproduced or distributed without prior permission from the architect.

Scale	1:100 @ A1 (1:200 @ A3)
Drawn	MK Checked AD
Project No.	S11733
Status	Amended Development Application
Plot Date	3/7/2015 3:43:47 PM
Plot File	S:\17305\17305\1733\Draw_130Elizabeth00_metric.dwg
Drawing No.	DA03.204[A] (Revision)

Melbourne 1 Nicholson Street
Melbourne VIC 3000 Australia
T 03 8664 6200 F 03 8664 6300
email mels@batesmart.com.au
http://www.batesmart.com.au

Sydney 43 Britmore Street
Sydney NSW 2010 Australia
T 02 8354 5100 F 02 8354 5199
email syd@batesmart.com.au
http://www.batesmart.com.au

Bates Smart Architects Pty Ltd ABN 68 094 740 986

BATESSMART

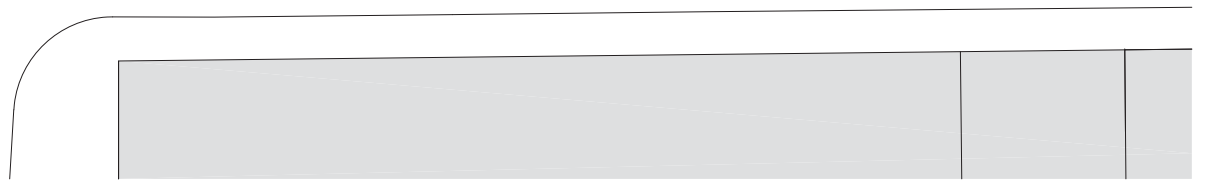
ATTACHMENT A

LIVERPOOL STREET

ELIZABETH STREET



CLARKE STREET



130 Elizabeth Street, Sydney
 Hyde Development Nominees Pty Ltd
 Upper Podium Plan
 Levels 7-8
 Showing Level 7 Plan

Scale: 1:100 @ A1 (1:200 @ A3)
 Drawn: MK Checked: AD
 Project No.: S11733
 Status: Amended Development Application
 Plot Date: 3/7/2015 3:43:58 PM
 Plot File: S:\1733\1733\1733_Cover_130Elizabeth00_metric.dwg
 Drawing No.: DA03.207[A] (Revision)

Melbourne 1 Nicholson Street
 Melbourne VIC 3000 Australia
 T 03 8664 6200 F 03 8664 6300
 email: info@bates-smart.com.au
 http://www.bates-smart.com.au

Sydney 43 Brisbane Street
 Surry Hills NSW 2010 Australia
 T 02 8354 5100 F 02 8354 5199
 email: syd@bates-smart.com.au
 http://www.bates-smart.com.au

Bates Smart Architects Pty Ltd ABN 68 094 740 986

Revision	Date	Description	Initials	Checked
B	02.07.15	Amended DA	MK	AD
A	19.12.14	Development Application	KW	ADD/T

Check all dimensions and site conditions prior to commencement of any work. The purchaser or owner of any assets, buildings, sites, services or equipment and the appropriateness of this strategy and/or the inclusion of any equipment.
 All drawings to be used in conjunction with all relevant documents and all other construction documents.
 Do not scale drawings unless for specific dimensions only. Any dimensions for all drawings shall be referred to the original for confirmation.
 All drawings may not be reproduced or distributed without prior permission from the architect.



PRELIMINARY
 NOT FOR CONSTRUCTION

BATESSMART

ATTACHMENT A

LIVERPOOL STREET

ELIZABETH STREET



CLARKE STREET

130 Elizabeth Street, Sydney
Hyde Development Nominees Pty Ltd
Lower Setback Level
Level 9

Scale:	1:100 @ A1 (1:200 @ A3)
Drawn:	MK Checked AD
Project No.:	S11733
Status:	Amended Development Application
PKT Date:	3/7/2015 3:44:08 PM
PKT File:	S:\11733\11733\11733_cour_130Elizabeth90_metric.dwg
Drawing No.:	DA03.209[A] (Revision)

Melbourne 1 Nicholson Street
Melbourne VIC 3000 Australia
T 03 8664 6200 F 03 8664 6300
email: info@batesmart.com.au
http://www.batesmart.com.au

Sydney 43 Brisbane Street
Sydney NSW 2010 Australia
T 02 8354 5100 F 02 8354 5199
email: syd@batesmart.com.au
http://www.batesmart.com.au

Bates Smart Architects Pty Ltd ABN 66 094 740 956

PRELIMINARY
NOT FOR CONSTRUCTION

Revision	Date	Description	Initial	Checked
B	02.07.15	Amended DA	MK	AD
A	19.12.14	Development Application	KW	AD/DT

Check all dimensions and site conditions prior to commencement of any work, the purchase or ordering of any materials, fixtures, fittings, and/or equipment and the preparation of this drawing and/or the fabrication of any components.
All drawings to be used for construction shall be accompanied by the appropriate documents and other construction documents.
Do not scale drawings unless specifically instructed to do so. Any dimensions for the drawing shall be referred to the architect for clarification.
All drawings may not be reproduced or distributed without prior permission from the architect.



DA03.209[A]

BATESSMART

ATTACHMENT A

LIVERPOOL STREET

ELIZABETH STREET



THE HYDE
157 LIVERPOOL STREET

CLARKE STREET

130 Elizabeth Street, Sydney
Hyde Development Nominees Pty Ltd
Low Tower Plan
Levels 10-15

Showing Level 10 Plan

Scale:	1:100 @ A1 (1:200 @ A3)
Drawn:	MK Checked AD
Project No.:	S11733
Status:	Amended Development Application
Plot Date:	3/7/2015 3:44:24 PM
Plot File:	S:\1733\1733\1733_cour_130Elizabeth100_metric.dwg
Drawing No.:	DA03.210[B] (Revision)

Melbourne 1 Nicholson Street
Melbourne VIC 3000 Australia
T 03 8664 6200 F 03 8664 6300
email: info@batesmart.com.au
http://www.batesmart.com.au

Sydney 43 Brisbane Street
Sydney NSW 2010 Australia
T 02 8354 5100 F 02 8354 5199
email: syd@batesmart.com.au
http://www.batesmart.com.au

Bates Smart Architects Pty Ltd ABN 66 094 740 986



Check all dimensions and site conditions prior to commencement of any work. The purchaser or owner of any assets, buildings, sites, services or equipment and the approval of this drawing and the liability of any contractor.
All drawings to be made in accordance with all relevant documents and all other constraints documents.
Do not rely on drawings made for other than this use. Any alterations to drawings shall be referred to the architect for confirmation.
All drawings may not be reproduced or distributed without prior permission from the architect.

PRELIMINARY
NOT FOR CONSTRUCTION

Rev/No	Date	Description	Initial	Checked
B	02.07.15	Amended DA	MK	AD
A	19.12.14	Development Application	KW	ADD/DT

BATESSMART

ATTACHMENT A

LIVERPOOL STREET

ELIZABETH STREET



THE HYDE
157 LIVERPOOL
STREET

CLARKE STREET

130 Elizabeth Street, Sydney
Hyde Development Nominees Pty Ltd
Upper Setback Plan
Level 16

Scale:	1:100 @ A1 (1:200 @ A3)
Drawn:	MK Checked AD
Project No.:	S11733
Status:	Amended Development Application
PKT Date:	3/7/2015 3:44:33 PM
PKT File:	S:\1733\1733\1733_cour_130Elizabeth160_metric.dwg
Drawing No.:	DA03.216[B] (Revision)

Melbourne 1 Nicholson Street
Melbourne VIC 3000 Australia
T 03 8664 6200 F 03 8664 6300
email: info@batesmart.com.au
http://www.batesmart.com.au

Sydney 43 Britmore Street
Sydney NSW 2010 Australia
T 02 8354 5100 F 02 8354 5199
email: syd@batesmart.com.au
http://www.batesmart.com.au

Bates Smart Architects Pty Ltd ABN 68 094 740 956

PRELIMINARY
NOT FOR CONSTRUCTION

Revision	Date	Description	Initial	Checked
B	02.07.15	Amended DA	MK	AD
A	19.12.14	Development Application	KW	AD/DT

Check all dimensions and site conditions prior to commencement of any work. The purchaser or owner of any assets, site, plan, or other documents and the approval of this drawing and the liability of any construction. All drawings to be made in accordance with all relevant documents and all other construction documents. Do not rely on drawings for any other purposes. Any dimensions on drawings shall be referred to the architect for clarification. All drawings may not be reproduced or distributed without prior permission from the architect.



ATTACHMENT A

LIVERPOOL STREET



CLARKE STREET

130 Elizabeth Street, Sydney
Hyde Development Nominees Pty Ltd
Lower Mid Tower Plan
Levels 17-20
Showing Level 17 Plan

Scale: 1:100 @ A1 (1:200 @ A3)
 Drawn: MK Checked: AD
 Project No.: S11733
 Status: Amended Development Application
 Plot Date: 3/7/2015 3:44:54 PM
 Plot File: S:\17\001\1999\11733\Draw_130Elizabeth100_metric\pk18...
 Drawing No.: DA03.217[B] (Revision)

Melbourne 1 Nicholson Street
Melbourne VIC 3000 Australia
T 03 8664 6200 F 03 8664 6300
email: info@batesmart.com.au
http://www.batesmart.com.au

Sydney 43 Britmore Street
Sydney NSW 2010 Australia
T 02 8354 5100 F 02 8354 5199
email: syd@batesmart.com.au
http://www.batesmart.com.au

Bates Smart Architects Pty Ltd ABN 68 094 740 986



Check all dimensions and site conditions prior to commencement of any work. The purchaser or owner of any assets, buildings, sites, services or equipment and the approval of this drawing and the liability of any contractor.
 All drawings to be made in accordance with all relevant documents and all other constraints documents.
 Do not scale drawings unless specifically stated. Any dimensions shall prevail over the printed or digital data.
 All drawings may not be reproduced or distributed without prior permission from the architect.

PRELIMINARY
NOT FOR CONSTRUCTION

Rev/No	Date	Description	Initial	Checked
B	02.07.15	Amended DA	MK	AD
A	19.12.14	Development Application	KW	AD/DT

BATESSMART

ATTACHMENT A

LIVERPOOL STREET

ELIZABETH STREET



THE HYDE
157 LIVERPOOL
STREET

CLARKE STREET

130 Elizabeth Street, Sydney
Hyde Development Nominees Pty Ltd
Upper Setback Plan
Level 21

Scale: 1:100 @ A1 (1:200 @ A3)
 Drawn: MK Checked: AD
 Project No.: S11733
 Status: Amended Development Application
 Pkt Date: 3/7/2015 3:44:57 PM
 Pkt File: S:\1733\1733\1733_cdw_130Elizabeth00_metric\pk18...
 Drawing No.: **DA03.221[B]** (Revision)

Melbourne 1 Nicholson Street
Melbourne VIC 3000 Australia
T 03 8664 6200 F 03 8664 6300
email: em@bates-smart.com.au
http://www.bates-smart.com.au

Sydney 43 Britmore Street
Sydney NSW 2010 Australia
T 02 8354 5100 F 02 8354 5199
email: sy@bates-smart.com.au
http://www.bates-smart.com.au

Bates Smart Architects Pty Ltd ABN 66 094 740 986

PRELIMINARY
NOT FOR CONSTRUCTION

Revision	Date	Description	Initial	Checked
B	02.07.15	Amended DA	MK	AD
A	19.12.14	Development Application	KW	AD/DT

Check all dimensions and site conditions prior to commencement of any work. The purchaser or owner of any assets, buildings, sites, services or equipment and the approval of this drawing and the liability of any contractor.
 All drawings to be made in accordance with all relevant documents and all other constraints documents.
 Do not use drawings for any other purpose. Any alteration to this drawing shall be referred to the architect for details.
 All drawings may not be reproduced or distributed without prior permission from the architect.



BATESSMART

ATTACHMENT A

LIVERPOOL STREET



CLARKE STREET

130 Elizabeth Street, Sydney
Hyde Development Nominees Pty Ltd
Upper Mid Tower Plan
Levels 22-25
Showing Level 22 Plan

Scale: 1:100 @ A1 (1:200 @ A3)
 Drawn: MK Checked: AD
 Project No.: S11733
 Status: Amended Development Application
 Plot Date: 3/7/2015 3:45:08 PM
 Plot File: S:\1733\1733\1733_cdw_130Elizabeth00_mstricalp18...
 Drawing No.: **DA03.222[B]** (Revision)

Melbourne 1 Nicholson Street
Melbourne VIC 3000 Australia
T 03 8664 6200 F 03 8664 6300
email: info@batesmart.com.au
http://www.batesmart.com.au

Sydney 43 Brisbane Street
Sydney NSW 2010 Australia
T 02 8354 5100 F 02 8354 5199
email: syd@batesmart.com.au
http://www.batesmart.com.au

Bates Smart Architects Pty Ltd ABN 68 094 740 986

Rev/No	Date	Description	Initial	Checked
B	02.07.15	Amended DA	MK	AD
A	19.12.14	Development Application	KW	AD/DT

Check all dimensions and site conditions prior to commencement of any work. The purchaser or owner of any assets, buildings, sites, services or equipment and the approval of this drawing and the liability of any contractor.
 All drawings to be made in accordance with all relevant documents and all other constraints documents.
 Do not use drawings for any other purpose. Any alterations to drawings shall be referred to the architect for confirmation.
 All drawings may not be reproduced or distributed without prior permission from the architect.



PRELIMINARY
NOT FOR CONSTRUCTION

BATESSMART

ATTACHMENT A

LIVERPOOL STREET

ELIZABETH STREET



THE HYDE
157 LIVERPOOL STREET

CLARKE STREET

130 Elizabeth Street, Sydney
Hyde Development Nominees Pty Ltd
Upper Setback Plan
Level 26

Scale: 1:100 @ A1 (1:200 @ A3)
 Drawn: MK Checked: AD
 Project No.: S11733
 Status: Amended Development Application
 Plot Date: 3/7/2015 3:24:51 PM
 Plot File: S:\1733\1733\1733_cour_130Elizabeth00_mechanical.kit...
 Drawing No.: **DA03.226[B]** (Revision)

Melbourne 1 Nicholson Street
Melbourne VIC 3000 Australia
T 03 8664 6200 F 03 8664 6300
email: info@batesmart.com.au
http://www.batesmart.com.au

Sydney 43 Britmore Street
Sydney NSW 2010 Australia
T 02 8354 5100 F 02 8354 5199
email: syd@batesmart.com.au
http://www.batesmart.com.au

Bates Smart Architects Pty Ltd ABN 68 094 740 986

PRELIMINARY
NOT FOR CONSTRUCTION

Revision	Date	Description	Initial	Checked
B	02.07.15	Amended DA	MK	AD
A	19.12.14	Development Application	KW	AD/DT

Check all dimensions and site conditions prior to commencement of any work, the purchase or ordering of any materials, fixtures, fittings, services or equipment and the preparation of any drawings and/or the fabrication of any components.
 All drawings to be made in accordance with all relevant documents and all other constraints documents.
 Do not refer to drawings as being 'final' or 'for construction' only. Any alterations to drawings shall be referred to the architect for confirmation.
 All drawings may not be reproduced or distributed without prior permission from the architect.



ATTACHMENT A

LIVERPOOL STREET

ELIZABETH STREET



CLARKE STREET

130 Elizabeth Street, Sydney
Hyde Development Nominees Pty Ltd

High Tower Plan
Levels 27-30, L32 Plan
Showing Level 27 Plan

Scale:	1:100 @ A1 (1:200 @ A3)
Drawn:	MK Checked AD
Project No.:	S11733
Status:	Amended Development Application
Plot Date:	3/7/2015 3:45:32 PM
Plot File:	S:\11733\11733\11733_cour_130Elizabeth00_mstrical.dwg
Drawing No.:	DA03.227[B] (Revision)

Melbourne 1 Nicholson Street
Melbourne VIC 3000 Australia
T 03 8664 6200 F 03 8664 6300
email: info@bates-smart.com.au
http://www.bates-smart.com.au

Sydney 43 Brisbane Street
Sunny Hills NSW 2010 Australia
T 02 8354 5100 F 02 8354 5199
email: syd@bates-smart.com.au
http://www.bates-smart.com.au

Bates Smart Architects Pty Ltd ABN 66 094 740 986



Check all dimensions and site conditions prior to commencement of any work, the purchase or rental of any materials, fixtures, fittings, and services to be provided and the approval of this drawing and the satisfaction of any conditions.
All drawings to be made in accordance with all relevant documents and all other construction documents.
Do not scale drawings made for this drawing only. Any dimensions on drawings shall be referred to the architect for clarification.
All drawings may not be reproduced or distributed without prior permission from the architect.

DA03.227[B]

BATESSMART

PRELIMINARY
NOT FOR CONSTRUCTION

Revision	Date	Description	Initial	Checked
B	02.07.15	Amended DA	MK	AD
A	19.12.14	Development Application	KW	AD/DT

ATTACHMENT A

LIVERPOOL STREET

ELIZABETH STREET



CLARKE STREET

130 Elizabeth Street, Sydney
Hyde Development Nominees Pty Ltd
Upper Setback Plan
Level 31

Scale: 1:100 @ A1 (1:200 @ A3)
 Drawn: MK Checked: AD
 Project No.: S11733
 Status: Amended Development Application
 Plot Date: 3/7/2015 3:45:42 PM
 Plot File: S:\11733\11733_03\130Elizabeth00_metric\pk11...
 Drawing No.: **DA03.231[B]** (Revision)

Melbourne 1 Nicholson Street
Melbourne VIC 3000 Australia
T 03 8664 6200 F 03 8664 6300
email: info@batesmart.com.au
http://www.batesmart.com.au

Sydney 43 Brisbane Street
Sydney NSW 2010 Australia
T 02 8354 5100 F 02 8354 5199
email: syd@batesmart.com.au
http://www.batesmart.com.au

Bates Smart Architects Pty Ltd ABN 66 094 740 986



Check all dimensions and site conditions prior to commencement of any work, the purchase or ordering of any materials, the design, construction or installation and the preparation of this drawing and the fabrication of any components.
 All drawings to be made in accordance with all relevant documents and all other constraints documents.
 Do not use drawings for any other purpose than that for which they were prepared. Any alteration to the drawings shall be referred to the architect for confirmation.
 All drawings may not be reproduced or distributed without prior permission from the architect.

PRELIMINARY
NOT FOR CONSTRUCTION

Revision	Date	Description	Initial	Checked
B	02.07.15	Amended DA	MK	AD
A	19.12.14	Development Application	KW	AD/DT

BATESSMART

ATTACHMENT A

LIVERPOOL STREET

ELIZABETH STREET



CLARKE STREET

130 Elizabeth Street, Sydney
Hyde Development Nominees Pty Ltd
High Tower Plan
Level 33 Plan

Scale: 1:100 @ A1 (1:200 @ A3)
 Drawn: MK Checked: AD
 Project No.: S11733
 Status: Amended Development Application
 Plot Date: 3/7/2015 3:51:39 PM
 Plot File: S:\1733\1733\1733_cour_130Elizabeth00_metric.dwg
 Drawing No.: DA03.233 [B] (Revision)

Melbourne 1 Nicholson Street
Melbourne VIC 3000 Australia
T 03 8664 6200 F 03 8664 6300
email: info@bates-smart.com.au
http://www.bates-smart.com.au

Sydney 43 Brisbane Street
Sydney NSW 2010 Australia
T 02 8354 5100 F 02 8354 5199
email: syd@bates-smart.com.au
http://www.bates-smart.com.au

Bates Smart Architects Pty Ltd ABN 66 094 740 986

PRELIMINARY
NOT FOR CONSTRUCTION

Revision	Date	Description	Initial	Checked
B	02.07.15	Amended DA	MK	AD
A	19.12.14	Development Application	KW	AD/DT

Check all dimensions and site conditions prior to commencement of any work, the purchase or ordering of any materials, fixtures, fittings, services or equipment and the preparation of any drawings and/or the fabrication of any components.
 All drawings to be made in accordance with all relevant documents and all other constraints documents.
 Do not refer to drawings made for other than this work, any dimensions or details shown shall be referred to the architect for clarification.
 All drawings may not be reproduced or distributed without prior permission from the architect.

